

# 20/8 Stenhouse Street West

Stenhouse, EH11 3DX



2 bed



1 bath



1 public

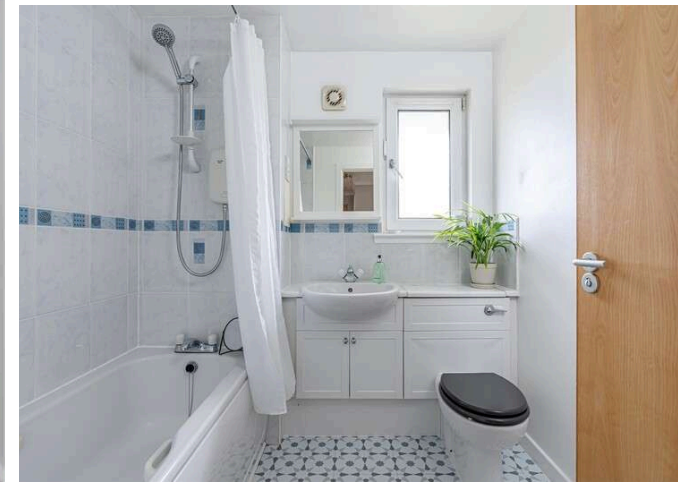
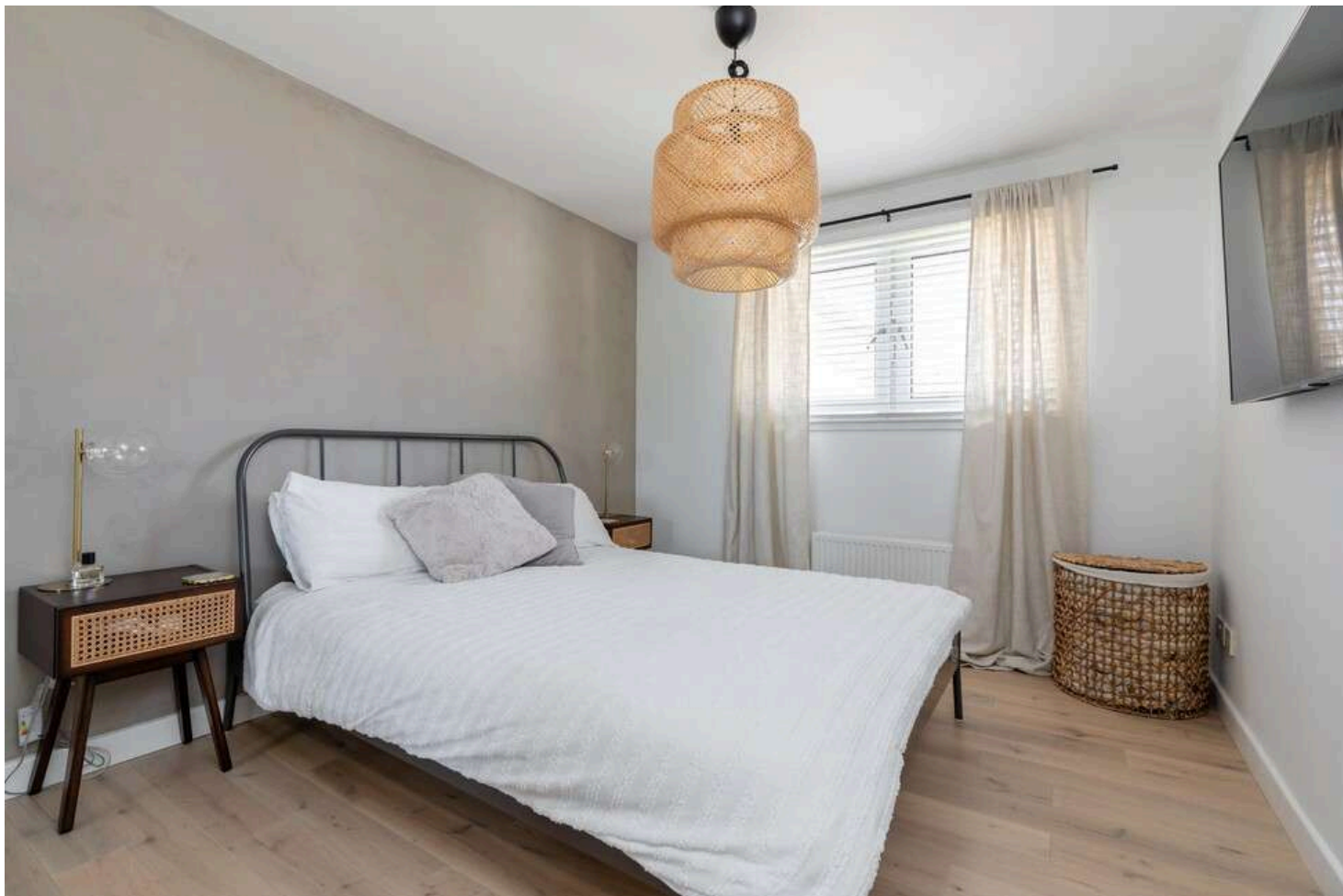


## Key Features

- Central Hallway
- Lounge with private balcony
- Modern kitchen
- Two double bedrooms -fitted wardrobes
- Bathroom with shower
- Residents parking
- Well maintain communal gardens
- Attractive views

EPC: C

Council Tax: Band C



## Location

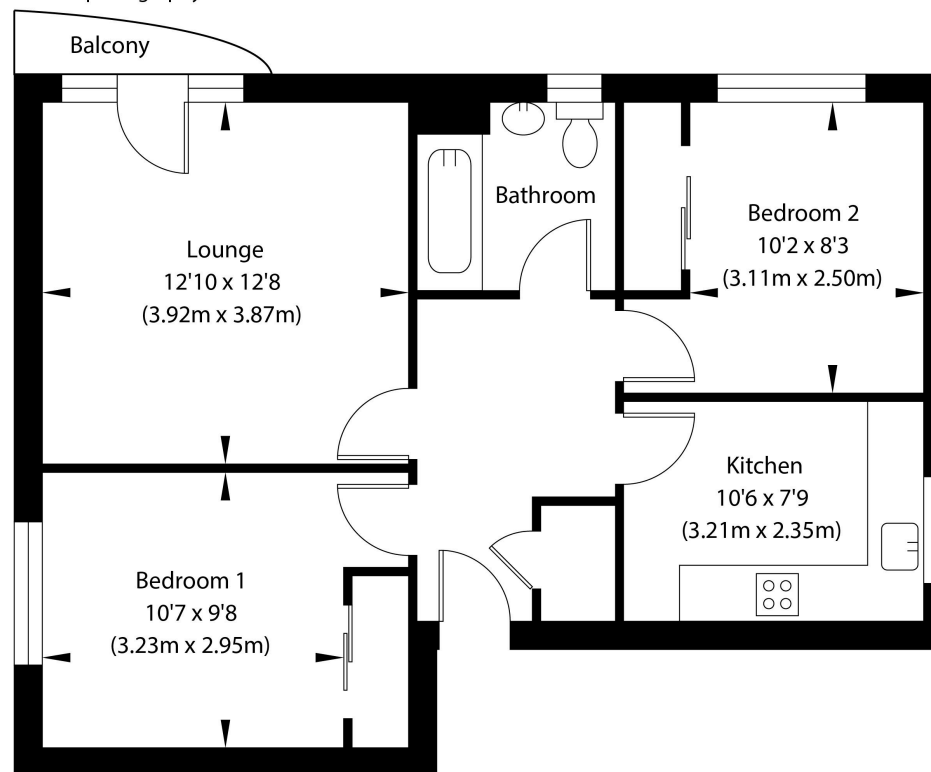
Stenhouse is a very popular residential, some 3 miles west from the city centre. There is a good range of amenities which include local shops and a Tesco Express, whilst both ASDA and Sainsbury's supermarkets are nearby. The Corn Exchange, Craiglockhart Sports Centre, Pure Gym, several golf courses and open walking spaces at Colinton Dell and the Water of Leith are close by. Both the Gyle Shopping Centre and Fountain park leisure complex are located only a short distance away, facilities include a health and fitness centre, multi-screen cinema plus bars and restaurants. The area is well served by frequent bus services and Haymarket Train Station is also close by providing excellent links throughout Scotland and the tram network is easily accessible. For drivers the A70, A71 and A8 provide easy access to the north and west of the city linking to the main motorway networks and Edinburgh Airport, while the Western Approach Road provides easy access to the south and east, linking to the city bypass. Schooling is well represented at all levels.



Viewing  
Tel: 0131 253 2494



Second Floor  
Approx. Internal Area 57.67 Sq M / 621 Sq Ft.  
Not to scale. For identification only.  
© www.planography.co.uk 2022



5 South Charlotte Street, Edinburgh, EH2 4AN T: 0131 564 1159 E: info@rd-legalservices.co.uk



Disclaimer: These particulars do not form part of any contract or missive to be entered into with a prospective purchaser. All statements and measurements contained herein are believed to be correct but are not warranted or guaranteed. Intending purchasers must satisfy themselves as to the accuracy. No guarantee is given as to the working conditions of any appliance mentioned in these particulars. The photographs shown solely belong to RD Legal.