



11 Ashley Drive

Craiglockhart, EH11 1RP



4 bed



2 bath



1 public



Key Features

- Fully modernised family home
- Large living room with sliding doors
- Open plan Kitchen/Dining room
- 4 bedrooms, with master ensuite
- 2 Bathrooms
- Private secluded south facing garden
- Off street parking
- Gas central Heating
- Double Glazed

EPC: C

Council Tax: Band F





Location

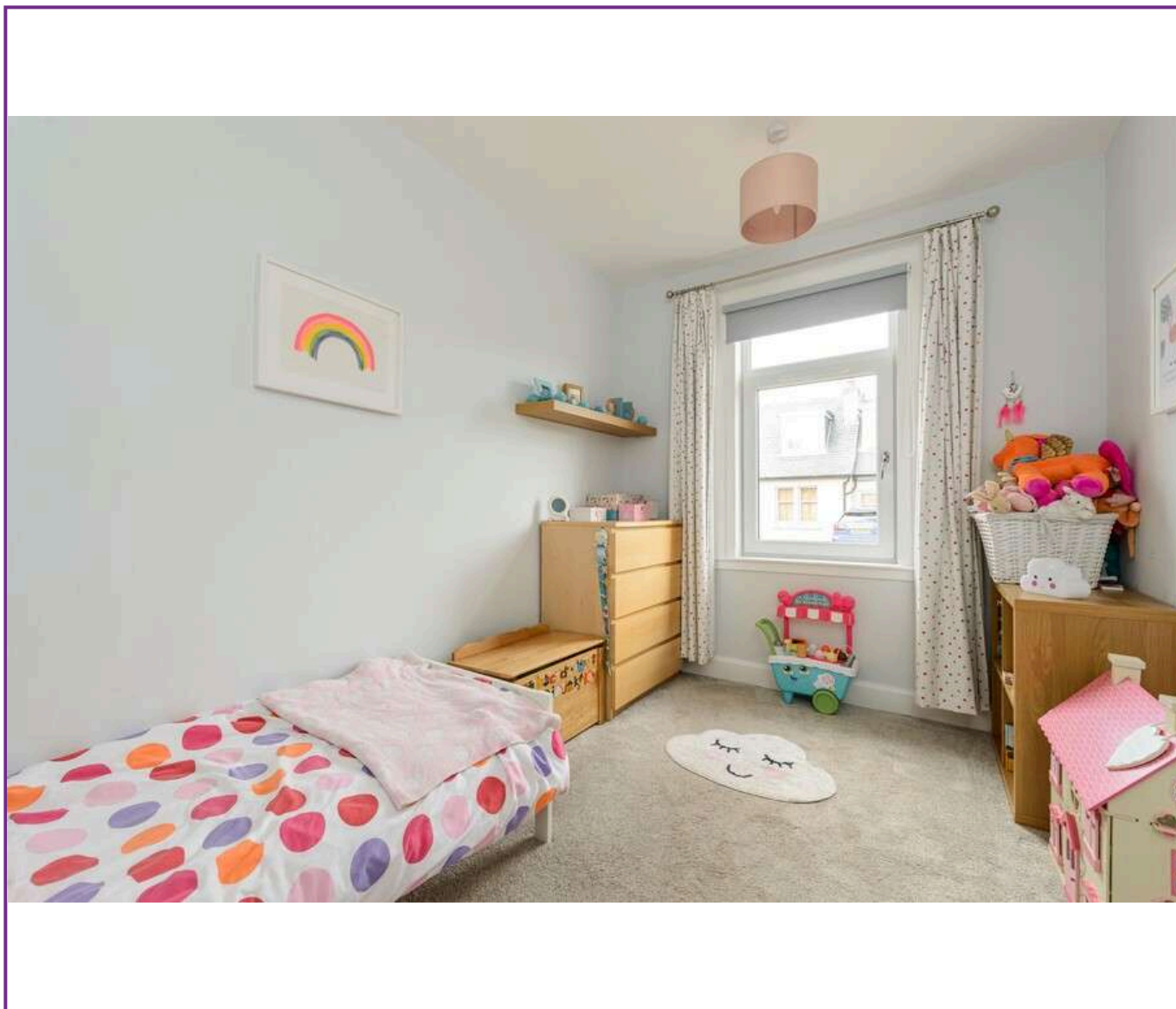
Situated in the Shandon area of Edinburgh extremely popular with families due to the proximity of several good schools. There are a range of amenities including grocery stores, cafes and restaurants.

One of the main attractions in the area is Harrison Park, featuring children play area, sports facilities and picnic spots especially during the summer month. The Union Canal is very popular with walkers, joggers and cyclists

Shandon is a peaceful and quiet residential area that is well connected to the rest of Edinburgh



Viewing
Tel: 0131 253 2494



5 South Charlotte Street, Edinburgh, EH2 4AN T: 0131 564 1159 E: info@rd-legalservices.co.uk

espc ZOOPLA PrimeLocation.com



Disclaimer: These particulars do not form part of any contract or missive to be entered into with a prospective purchaser. All statements and measurements contained herein are believed to be correct but are not warranted or guaranteed. Intending purchasers must satisfy themselves as to the accuracy. No guarantee is given as to the working conditions of any appliance mentioned in these particulars. The photographs shown solely belong to RD Legal.