



# 8 Schirehall Avenue

Dalkeith, EH22 1FX



4 bed



2 bath



2 public

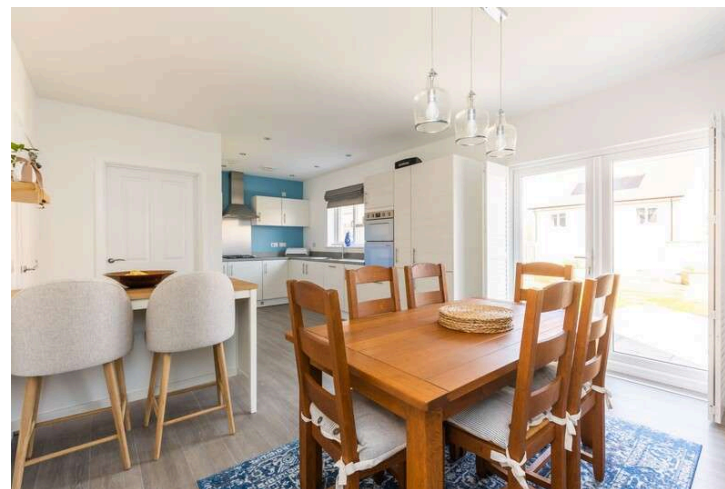


## Key Features

- Detached executive 4 bed home
- Living room, open plan kitchen/dinner
- Master bedroom with ensuite
- 3 additional bedrooms
- Separate study room & utility room
- Downstairs WC
- Private driveway & single garage
- Enclosed private garden
- Gas central heating
- Double glazed
- 6 Years of NHBC guarantee remaining

EPC: B

Council Tax: Band :





## Location

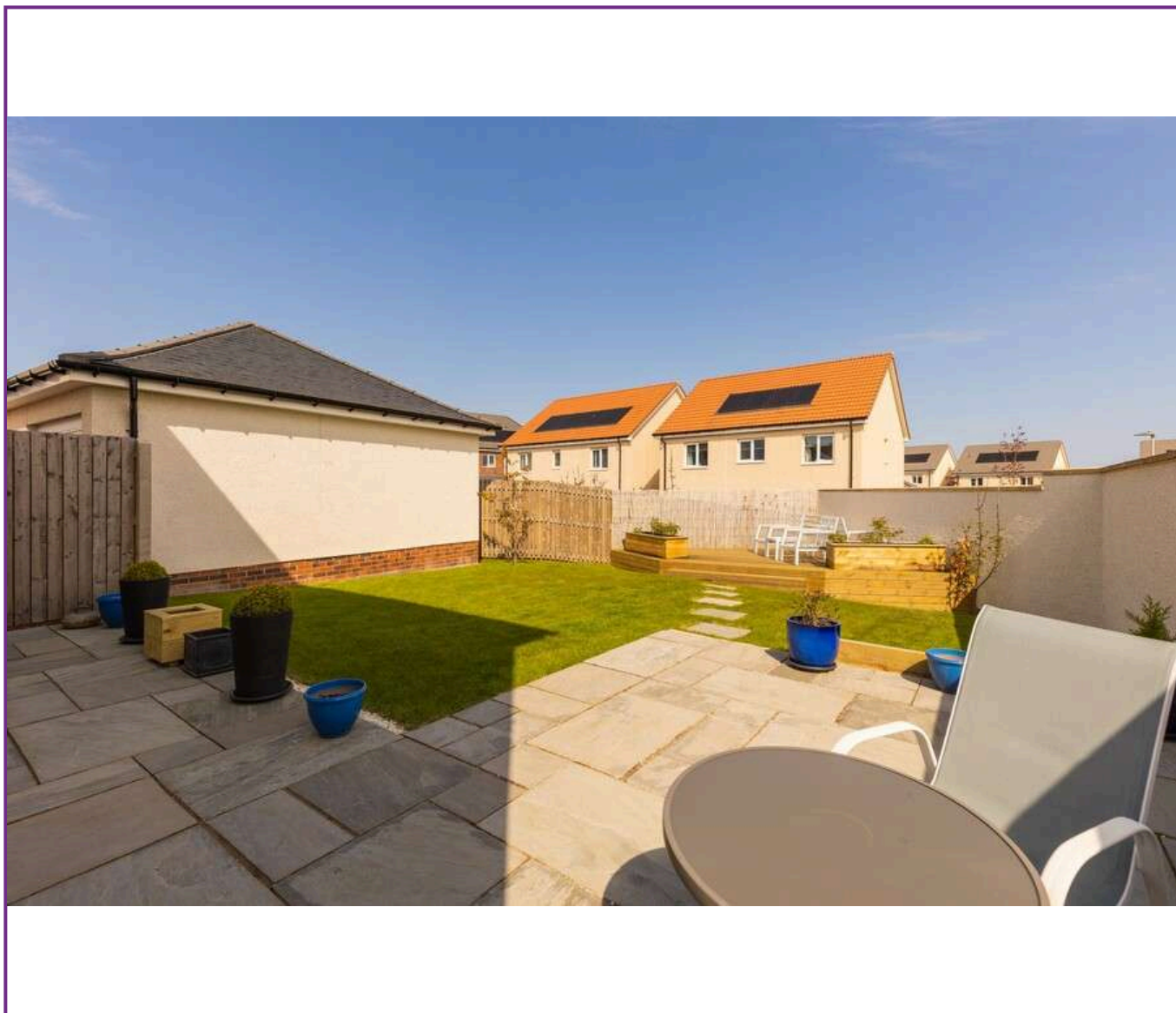
Danderhall is a highly popular village ideally located Southeast of Edinburgh city centre. Ideally placed for access to the Edinburgh Royal Infirmary, the City Bypass and the major road routes making it an excellent location for commuting to the City Centre, Midlothian and Borders.

It has an efficient public transport network providing access to all surrounding areas and into the city centre. The property is conveniently located a short distance from the Shawfair railway station on the borders rail line.

There are good local shops nearby to provide everyday needs, and a short drive to an extensive selection of retail outlets at Cameron Toll, Fort Kinnaird and Straiton Retail Park



Viewing  
Tel: 0131 253 2494



5 South Charlotte Street, Edinburgh, EH2 4AN T: 0131 564 1159 E: info@rd-legalservices.co.uk



Disclaimer: These particulars do not form part of any contract or missive to be entered into with a prospective purchaser. All statements and measurements contained herein are believed to be correct but are not warranted or guaranteed. Intending purchasers must satisfy themselves as to the accuracy. No guarantee is given as to the working conditions of any appliance mentioned in these particulars. The photographs shown solely belong to RD Legal.