

# Flat 5, 1 Kinleith Mill Road

Currie, EH14 6AX



2 bed



2 bath



1 public



## Key Features

- Open plan living/dining room/kitchen
- Balcony
- 2 double bedrooms
- Ensuite and separate family bathroom
- Gas central heating and double glazing

EPC: B

Council Tax: Band: E

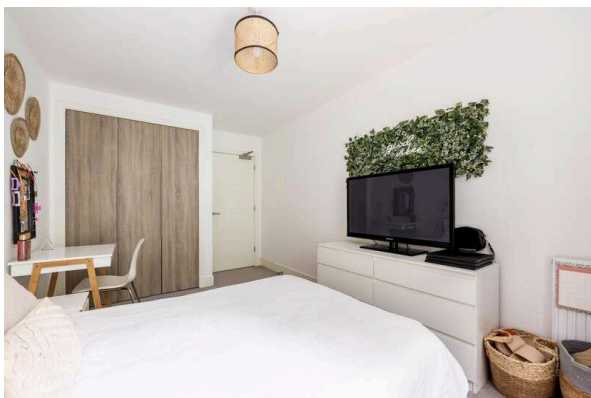




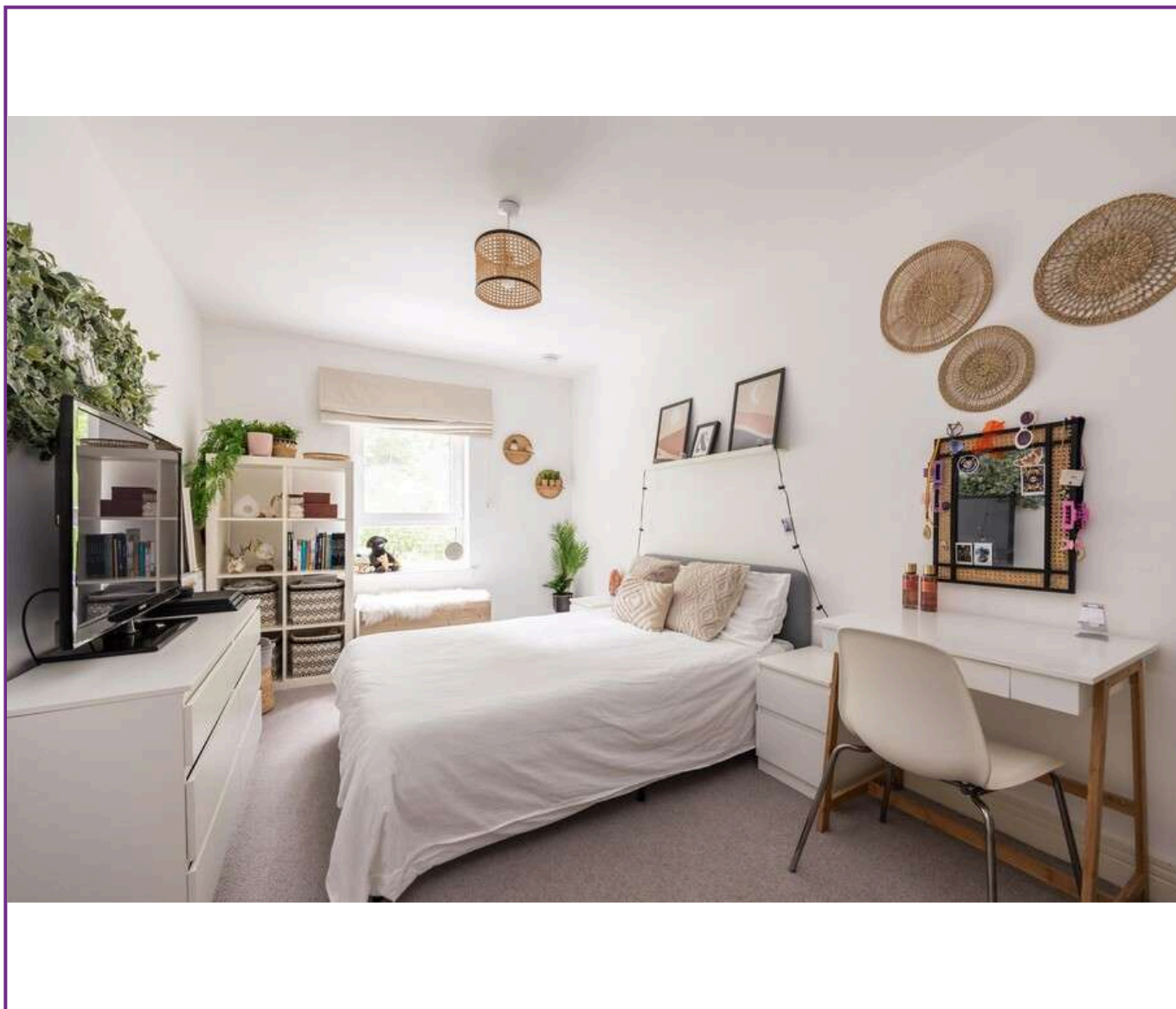
## Location

Located in a quiet cul-de-sac, within a modern residential development in Currie, part of a beautiful modern development built by the prestigious CALA Homes

Nestled by the Water of Leith, this stretch of the river is home to a flourishing new community. Kinleith Mill comprises contemporary homes, complemented by green open space and tree-lined walkways. It is an idyllic retreat, situated just off Lanark Road West, allowing excellent access to road and public transport links into Edinburgh and beyond.



Viewing  
Tel: 0131 253 2494



5 South Charlotte Street, Edinburgh, EH2 4AN T: 0131 564 1159 E: info@rd-legalservices.co.uk



Disclaimer: These particulars do not form part of any contract or missive to be entered into with a prospective purchaser. All statements and measurements contained herein are believed to be correct but are not warranted or guaranteed. Intending purchasers must satisfy themselves as to the accuracy. No guarantee is given as to the working conditions of any appliance mentioned in these particulars. The photographs shown solely belong to RD Legal.