



Flat 16, 3 Appin Street

Slateford, EH14 1PA



3 bed



3 bath



1 public



Key Features

- Spectacular penthouse apartment
- Large bright living room
- South east facing balcony
- Modern kitchen/dining room
- Three generous double bedrooms
- Two en-suite bathrooms
- Separate family bathroom
- Access by lift or stairs
- Utility room
- Gas central heating
- Double glazing
- Large loft storage area

EPC: C

Council Tax: Band F





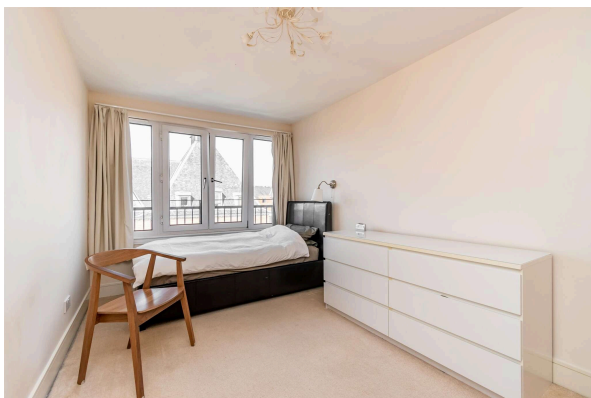
Location

Flat 16, at 3 Appin Street is an exceptionally spacious 3 bed top floor flat, situated in the popular Slateford area of Edinburgh.

Situated about 2 miles from the city centre, it is well-connected by public transport, making commuting easy while still providing a relatively quiet, more relaxed atmosphere compared to the bustling heart of Edinburgh.

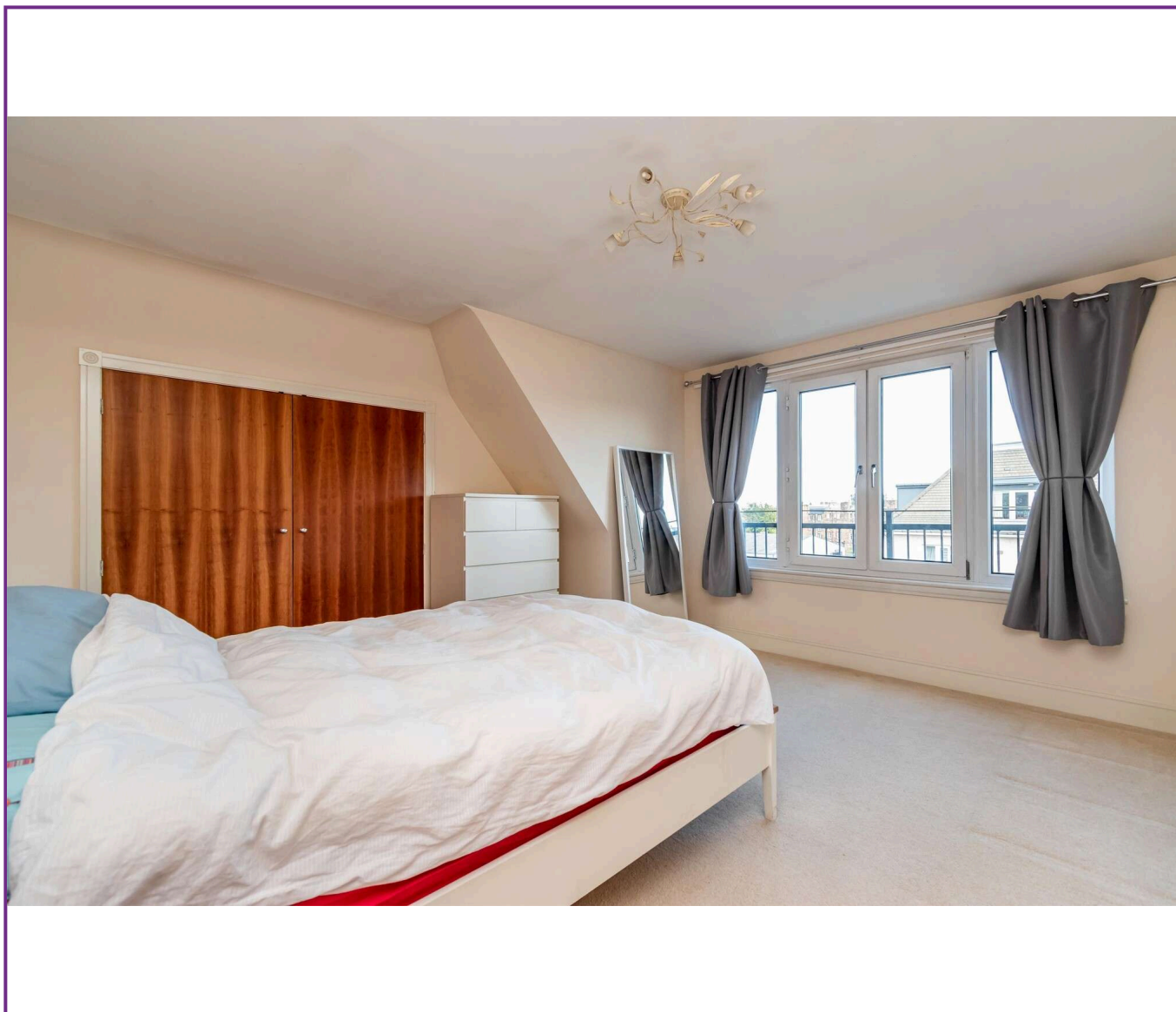
One of the benefits of living in Slateford is its proximity to parks and green spaces. The area is close to the Union Canal, which runs through Edinburgh, offering scenic walks, cycling routes, and opportunities for leisure.

There's also nearby Saughton Park, a pleasant green space with gardens, playgrounds, and sports facilities and Harrison Gardens



Viewing

Telephone Solicitors on 0131 253 2494



5 South Charlotte Street, Edinburgh, EH2 4AN T: 0131 564 1159 E: info@rd-legalservices.co.uk



Disclaimer: These particulars do not form part of any contract or missive to be entered into with a prospective purchaser. All statements and measurements contained herein are believed to be correct but are not warranted or guaranteed. Intending purchasers must satisfy themselves as to the accuracy. No guarantee is given as to the working conditions of any appliance mentioned in these particulars. The photographs shown solely belong to RD Legal.