

20 Laichpark Place

Chesser, EH14 1UN



3 bed



2 bath



2 public

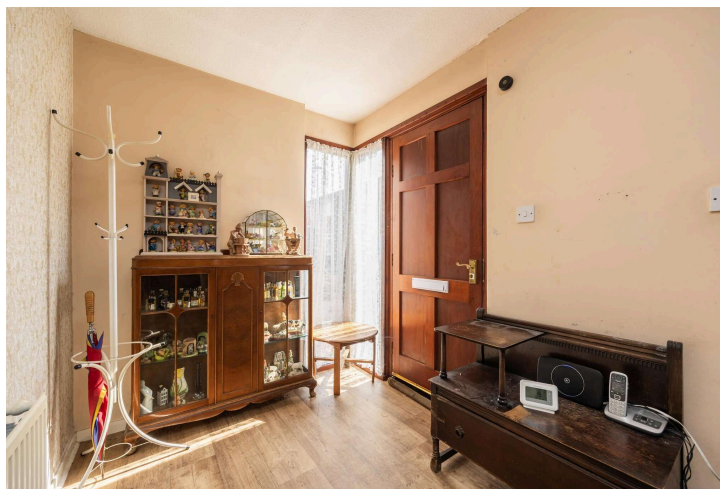


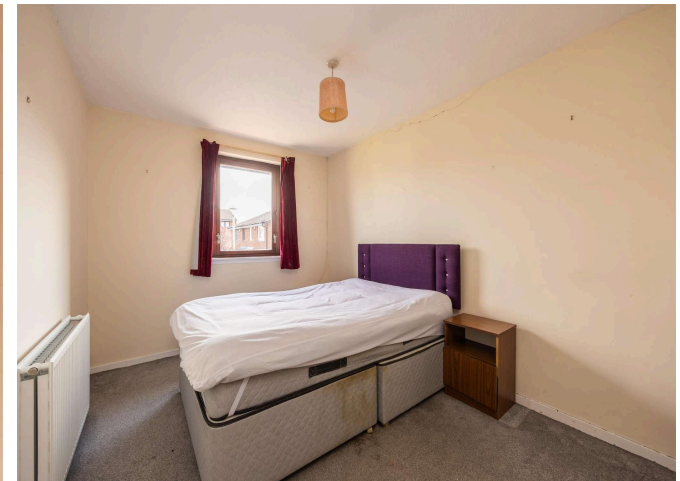
Key Features

- Spacious Living/Dining room
- 3/4 Bedrooms
- Family bathroom
- Downstairs shower room
- Ample storage
- Sunny south west facing rear garden
- Garage
- Gas central heating

EPC: C

Council Tax: Band: E





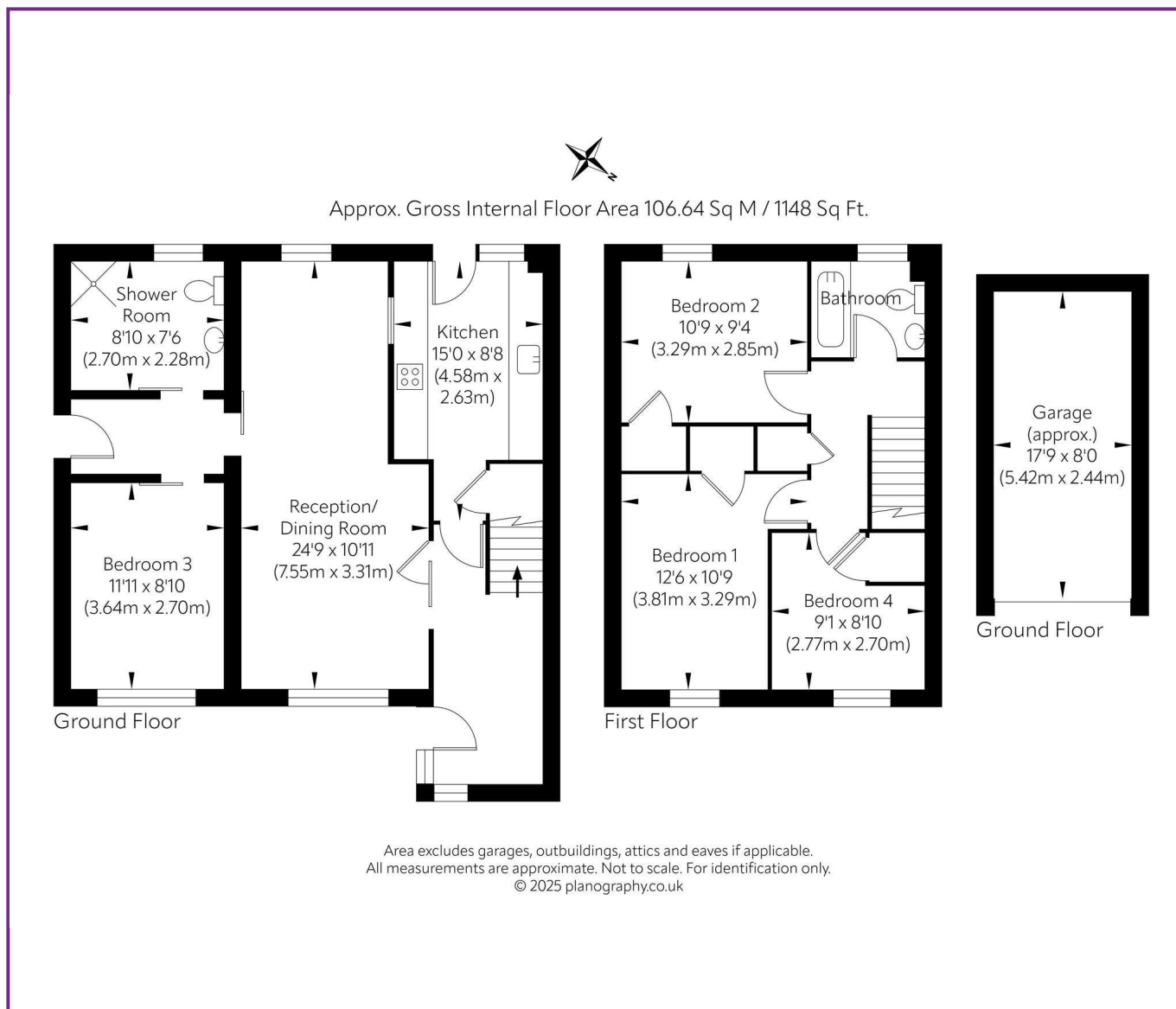
Location

Laichpark Place forms part of the popular residential area of Chesser, which is situated just under three miles west of Edinburgh City Centre. An excellent selection of shops can be found in the immediate vicinity, including an M&S food hall, Aldi, plus a 24 hour Asda superstore and petrol station. Schools catering for all age groups are easily accessible and there are a good range of leisure facilities in the surrounding area, including lovely walks along the Union Canal and the beautiful water of Leith Walkway, Carrick Knowe Golf Course, Nuffield Fitness and Wellbeing Centre, and the Corn Exchange, including bowling alley. Excellent bus services link the city centre and surrounding area and the City Bypass is close at hand, giving access to central Scotland's main motorway network.



Viewing

Open viewing on Sunday 2pm - 4pm or call Linda on 07828 468308 for an alternative appointment.



116 Colinton Road, Edinburgh EH14 1BY T: 0131 564 1159 E: info@rd-legalservices.co.uk

espc rightmove ZOOPLA



Disclaimer: These particulars do not form part of any contract or missive to be entered into with a prospective purchaser. All statements and measurements contained herein are believed to be correct but are not warranted or guaranteed. Intending purchasers must satisfy themselves as to the accuracy. No guarantee is given as to the working conditions of any appliance mentioned in these particulars. The photographs shown solely belong to RD Legal.